



An ISO 9001:2015
Certified Company

Speciality Products Research Group

1st Floor, Plot No: 29/3, F-II Block, MIDC, Pimpri, Pune - 411018, INDIA.
Tel/Fax : 020-25656669 e-mail: info@sprgchem.com website: www.sprgchem.com

Ref. No.: SRG/TDS/LCs/2015

Rev. No.: 00

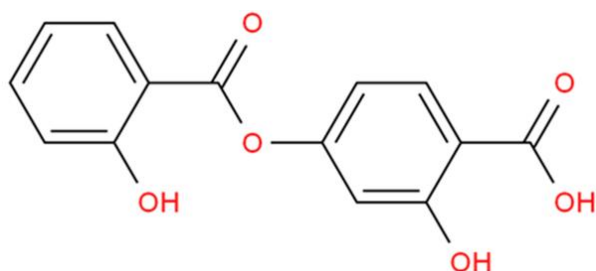
TECHNICAL DATA SHEET

LEAD COPPER COMPLEX – LC-12-15, LC-12-10, LC-12-6

| | |
|--------------------|---|
| CAS No: | 68411-07-4 |
| Synonyms: | Copper Lead Resorcyate Salicylate Complex |
| Molecular Formula: | C ₁₄ H ₁₄ CuO ₆ Pb |
| Avg Mass: | 549.0 g/mol |
| IUPAC Name: | 2,4-dihydroxybenzoic acid 2-hydroxybenzoic acid copper plumbane |

SPECIFICATION FOR LEAD COPPER COMPLEX – LC-12-15, LC-12-10, LC-12-6

| Sr. No. | Characteristics | Specified Limits | | |
|---------|-----------------------------------|------------------|--------------|--------------|
| | | LC-12-15 | LC-12-10 | LC-12-6 |
| 1 | Appearance | Green powder | Green powder | Green powder |
| 2 | Copper, % | 10.1 – 12.9 | 9.9 – 12.7 | 9.5 – 12.3 |
| 3 | Lead, % | 35.8 – 39.4 | 18.7 – 35.1 | 33.7 – 37.3 |
| 4 | B- Resorcylic Acid, % | 11.0 – 16.6 | 24.5 – 30.1 | 35.0 – 40.6 |
| 5 | Salicylic Acid, % | 34.5 – 39.7 | 21.8 – 27.0 | 10.6 – 15.8 |
| 6 | Oven Dry Loss, (2 hrs @ 105°C), % | 4.0 max | 4.0 max | 4.0 max |
| 7 | Acetone Solubles | 2.0 max | 2.0 max | 2.0 max |
| 8 | Average Particle Size, um | 8 | 8 | 8 |



Cu PbH₂



LEAD-COPPER BETA
RESORCYLATE SALICYLATE
COMPLEX LC-12-6, 12-10, 12-15
CAS NO : 68411-07-4



For Speciality Products Research Group

Proprietor

